

# Branston Jungle Improvement Report

## Branston & Mere Parish Council

### 1.Introduction

Branston & Mere Parish Council has undertaken a series of improvement works at the local nature reserve (known locally as ‘The Jungle’) to enhance its accessibility, safety, environmental value, and educational potential. This document provides an overview of completed works, environmental considerations, and plans for educational development.



## 2. Accessibility and Infrastructure Improvements.

### 2.1 Pathway Replacement

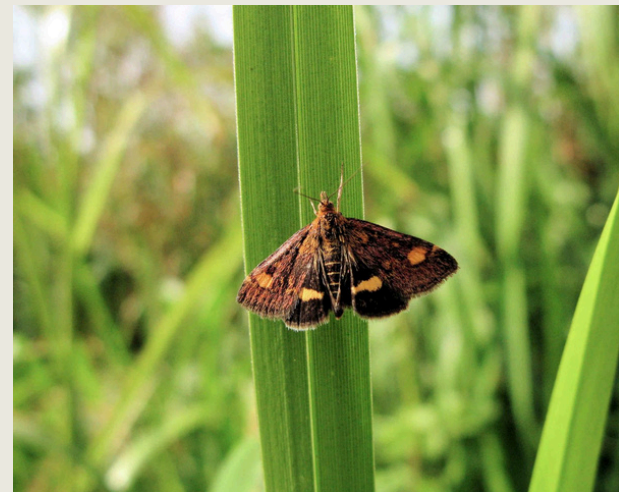
The old timber boardwalk, previously uneven and unsafe in wet conditions, has been replaced with a new limestone path with a pea gravel topping.

·The materials used are:

**Limestone:** Local, low-impact, durable.

**Pea Gravel:** Natural appearance, improves water drainage.

Pyraustra aurata or 'Mint Moth'  
inhabit chalk and limestone  
grassland, woodland and  
gardens.



### 2.2 Environmental Integration

This solution is environmentally sensitive, allowing for:

Natural water flow through **culverts**.

Reduced surface runoff and erosion.

Materials that blend onto the landscape aesthetically.

### 2.3 Existing Path Re-laying

An existing path within the reserve has been professionally re-laid

Outcome: Improved underfoot safety and all-weather access for walkers, including dog walkers.



### 3. Environmental Management

#### 3.1 Tree Maintenance

Ongoing tree maintenance has been carried out.  
Some Trees were removed due to safety concerns and to promote the health of surrounding woodland.  
Work is aligned with long-term ecological goals.

#### 3.2 Support for Biodiversity

Pathway and woodland works designed to preserve wildlife habitat.  
Use of permeable materials supports soil health and aquatic life.



Did you know that... Hawthorn  
Shield Bugs can release  
unpleasant odours when  
disturbed.

## 4. Educational Potential and Future Plans

### 4.1 Vision for Education

The nature reserve is well-suited for use as an outdoor classroom. there are multiple schools in the vicinity that could benefit from structured visits.

### 4.2 Proposed Educational Signage

Planned installation of educational signage featuring:  
Information on local flora and fauna  
Interactive learning prompts for children  
Site maps and nature trails.

### 4.3 Funding and Grants

The Parish Council is actively pursuing funding opportunities to:  
Procure and install durable, weatherproof signage  
Partner with local schools for tailored content



The larvae of the Plusia Festucae  
(Gold Spot) Moth feeds on  
Branched Bur Reed.





Meadowsweet flowers from June to September and produces a sweet, almond-like scent.



5. Summary Table

**Infrastructure** - New limestone and pea gravel path; culverts installed.

**Safety** - Resurfaced path; safer access year-round.

**Enviromental Impact** - Permeable, natural materials; water flow maintained.

**Tree Management** - Targeted removals; healthy canopy preserve.

**Wildlife Support** - Biodiverse environment encouraged.

**Educational Use** - Signage planned; local schools engaged.

**Grant Focus** - Funding sought for signage and learning enhancements.



Pebble Prominent moth larva are known for their distinctive posture, often holding their tail segments up in the air.



## 6.Conclusion

**Branston & Mere Parish Council continues to invest in the nature reserve as a community asset. The improvements support inclusive public access, environmental sustainability, and education.**

**We welcome opportunities to collaborate with funding bodies and educational institutions to realise the full potential of this valuable local resource.**

For further information, please contact the [clerk@branston-pc.gov.uk](mailto:clerk@branston-pc.gov.uk)



Hops are the flowers of the *Humulus lupulus* plant used in brewing beer to add bitterness and aroma, as well as for preservation.

